

Stainless Steel TECK™ Repair Clamps

Cambridge Brass is manufacturing Repair Clamps at our Cambridge facility in an effort to improve service levels.



NEW

Features include:

- Fully welded bar
- **NEW** clamp size ranges, match pipe size for better fit
- **NEW** Part Numbers
- Standard and custom sizes available.

Contact us for details.



425 Series Clamp



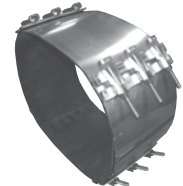
435 Series Clamp
with Outlet



825 Series Clamp



835 Series Clamp
with Outlet



1625 Series Clamp

Pipe Sizes: 425/435 Series fits 3" to 12" OD Range
825/835 Series fits 6" to 20" OD Range
1625/1635 Series fits 24" to 36" OD Range

Pipe Types: IPS, Cast A, Ductile Iron/C900/Cast B,C,D

Options include Taper gasket (finger gasket is standard) or Conductivity patch

AWWA or FIP Outlet



See Attached Charts
for **new** part numbers

Custom pipe diameters upon request
requires customer supplied exact OD measurement.

SERVICE SADDLES & REPAIR CLAMPS

425/435 SERIES TECK™ REPAIR CLAMPS



425 Series Clamp

Product Example: 425-0350-08
3" x 8" Finger Gasket



435 Series Clamp with Outlet

Product Example: 435-0350-08-A3TC
4" x 8" 3/4" CC Taper Gasket
Conductivity Pad

Nom. O.D.	Pipe Material		Range	Part Number	Width	Options Add T or C	Part Number	Width	Outlet Add from chart	Options Add T or C
4	IPS	4.50	4.30 - 4.70	425-0450-			435-0450-		-	
4			4.40 - 4.80	425-0460-			435-0460-		-	
4	DI / C900 / cast A	4.80	4.60 - 5.00	425-0480-			435-0480-		-	
4			4.75 - 5.15	425-0495-			435-0495-		-	
4	Cast B, C, D	5.00	4.80 - 5.20	425-0500-			435-0500-		-	
4			5.00 - 5.40	425-0520-			435-0520-		-	
6			6.40 - 6.80	425-0660-			435-0660-		-	
6	IPS	6.63	6.43 - 6.83	425-0663-			435-0663-		-	
6	DI / C900 / cast A	6.90	6.70 - 7.10	425-0690-			435-0690-		-	
6			6.80 - 7.20	425-0700-			435-0700-		-	
6			6.86 - 7.25	425-0705-			435-0705-		-	
6	Cast B, C, D	7.10	6.90 - 7.30	425-0710-			435-0710-		-	
6			7.10 - 7.50	425-0730-			435-0730-		-	
8			8.00 - 8.40	425-0820-			435-0820-		-	
8			8.40 - 8.80	425-0860-			435-0860-		-	
8	IPS	8.63	8.43 - 8.83	425-0863-			435-0863-		-	
8	DI / C900 / cast A, B	9.05	8.85 - 9.25	425-0905-			435-0905-		-	
8			8.98 - 9.38	425-0918-			425-0918-		-	
8	Cast C, D	9.30	9.10 - 9.50	425-0930-			435-0930-		-	
8			9.30 - 9.70	425-0950-			435-0950-		-	
10			10.50 - 10.90	425-1070-			435-1070-		-	
10	IPS	10.75	10.55 - 10.95	425-1075-			435-1075-		-	
10	DI / C900 / cast A, B	11.10	10.90 - 11.30	425-1110-			435-1110-		-	
10			11.05 - 11.45	425-1125-			435-1125-		-	
10	Cast C, D	11.40	11.20 - 11.60	425-1140-			435-1140-		-	
10			11.60 - 12.00	425-1180-			435-1180-		-	
10			11.85 - 12.25	425-1205-			435-1205-		-	
12	IPS	12.75	12.55 - 12.95	425-1275-			435-1275-		-	
12	DI / C900 / cast A, B	13.20	13.00 - 13.40	425-1320-			435-1320-		-	
12			13.15 - 13.55	425-1335-			435-1335-		-	
12	Cast C, D	13.50	13.30 - 13.70	425-1350-			435-1350-		-	
12			13.40 - 13.80	425-1360-			435-1360-		-	
12			13.80 - 14.20	425-1400-			435-1400-		-	
12			14.10 - 14.50	425-1430-			435-1430-		-	

Width	
08	8" wide
12	12" wide
16	16" wide
20	20" wide
24	24" wide

Options:	
T	Taper gasket (grid style) (finger gasket is standard)
C	Conductivity pad

Outlet Size:		Type	
		FIP	AWWA
3	3/4"	F	A
4	1"	F	A
5	1 1/4"	F	A
6	1 1/2"	F	A
7	2"	F	A

Different sizes and configurations available, please call for details.
NBR grid gasket certified to Standard NSF 61.

SERVICE SADDLES & REPAIR CLAMPS

825/835 SERIES TECK™ REPAIR CLAMPS



825 Series Clamp

Product Example: 825-0663-12
6" x 12" Finger Gasket

835 Series Clamp with Outlet

Product Example: 835-0663-12-A4TC
6" x 12" 1" CC Taper Gasket Conductivity Pad

Nom. O.D.	Pipe Material	Mean	Range	Part Number	Width	Options Add T or C	Part Number	Width	Outlet Add from chart	Options Add T or C
6	IPS	6.63	6.23 - 7.03	825-0663-			835-0663-		-	
6	DI / C900 / cast A	6.90	6.50 - 7.30	825-0690-			835-0690-		-	
			6.60 - 7.40	825-0700-			835-0700-		-	
6	Cast B, C, D	7.10	6.70 - 7.50	825-0710-			835-0710-		-	
8	IPS	8.63	8.23 - 9.03	825-0863-			835-0863-		-	
			8.60 - 9.40	825-0900-			835-0900-		-	
8	DI / C900 / cast A, B	9.05	8.65 - 9.45	825-0905-			835-0905-		-	
8	Cast C, D	9.30	8.90 - 9.70	825-0930-			835-0930-		-	
10	IPS	10.75	10.35 - 11.15	825-1075-			835-1075-		-	
10	DI / C900 / cast A, B	11.10	10.70 - 11.50	825-1110-			835-1110-		-	
10	Cast C, D	11.40	11.00 - 11.80	825-1140-			835-1140-		-	
12	IPS	12.75	12.35 - 13.15	825-1275-			835-1275-		-	
			12.72 - 13.52	825-1312-			835-1312-		-	
12	DI / C900 / cast A, B	13.20	12.80 - 13.60	825-1320-			835-1320-		-	
12	Cast C, D	13.50	13.10 - 13.90	825-1350-			835-1350-		-	
14	IPS	14.00	13.60 - 14.40	825-1400-			835-1400-		-	
14	DI / C900 / cast A, B	15.30	14.90 - 15.70	825-1530-			835-1530-		-	
			15.00 - 15.80	825-1540-			835-1540-		-	
14	Cast C, D	15.65	15.25 - 16.05	825-1565-			835-1565-		-	
16	IPS	16.00	15.60 - 16.40	825-1600-			835-1600-		-	
16	DI / C900 / cast A, B	17.40	17.00 - 17.80	825-1740-			835-1740-		-	
			17.20 - 18.00	825-1760-			835-1760-		-	
16	Cast C, D	17.80	17.40 - 18.20	825-1780-			835-1780-		-	
18	IPS	18.00	17.60 - 18.40	825-1800-			835-1800-		-	
18	DI / C900 / cast A, B	19.50	19.10 - 19.90	825-1950-			835-1950-		-	
			19.20 - 20.00	825-1960-			835-1960-		-	
18	Cast C, D	19.92	19.52 - 20.32	825-1992-			835-1992-		-	
20	IPS	20.00	19.60 - 20.40	825-2000-			835-2000-		-	
20	DI / C900 / cast A, B	21.60	21.20 - 22.00	825-2160-			835-2160-		-	
			21.40 - 22.20	825-2180-			835-2180-		-	
20	Cast C, D	22.06	21.66 - 22.46	825-2206-			835-2206-		-	

Width	
08	8" wide
12	12" wide
16	16" wide
20	20" wide
24	24" wide

Options:	
T	Taper gasket (grid style) (finger gasket is standard)
C	Conductivity pad

Outlet Size:		Type	
		FIP	AWWA
3	3/4"	F	A
4	1"	F	A
5	1 1/4"	F	A
6	1 1/2"	F	A
7	2"	F	A

Different sizes and configurations available, please call for details.
NBR grid gasket certified to Standard NSF 61.

SERVICE SADDLES & REPAIR CLAMPS

1625/1635 SERIES TECK™ REPAIR CLAMPS



1625 Series Clamp

Product Example: 1625-2400-12
24" x 12" Finger Gasket



1635 Series Clamp with Outlet

Product Example: 1635-2400-12-A4TC
24" x 12" 1" CC Taper Gasket Conductivity Pad

Nom. O.D.	Pipe Material	Pipe O.D.	Range	Part Number	Width	Options Add T or C	Part Number	Width	Outlet Add from chart	Options Add T or C
24	IPS	24.00	23.20 - 24.80	1625-2400-			1635-2400-		-	
			24.60 - 26.20	1625-2540-			1635-2540-			
24	DI / C900 / cast A, B	25.80	25.00 - 26.60	1625-2580-			1635-2580-		-	
24	Cast C, D	26.32	25.52 - 27.12	1625-2632-			1635-2632-		-	
30	IPS	30.00	29.20 - 30.80	1625-3000-			1635-3000-		-	
30	Cast A	31.74	30.94 - 32.54	1625-3174-			1635-3174-		-	
30	DI / C900 / cast B	32.00	31.20 - 32.80	1625-3200-			1635-3200-		-	
30	Cast C	32.40	31.60 - 33.20	1625-3240-			1635-3240-		-	
36	Cast A	37.96	37.16 - 38.76	1625-3796-			1635-3796-		-	
36	DI / C900 / cast B	38.30	37.50 - 39.10	1625-3830-			1635-3830-		-	
36	Cast C	38.70	37.90 - 39.50	1625-3870-			1635-3870-		-	
36	Cast D	39.16	38.36 - 39.96	1625-3916-			1635-3916-		-	

Width	
24	24" wide
32	32" wide

Options:	
T	Taper gasket (24" grid style, 32" flat style) (finger gasket is standard on 24")
C	Conductivity pad

Outlet Size:	Type	FIP	AWWA
3	3/4"	F	A
4	1"	F	A
5	1 1/4"	F	A
6	1 1/2"	F	A
7	2"	F	A

Different sizes and configurations available, please call for details.

NBR grid gasket certified to Standard NSF 61.