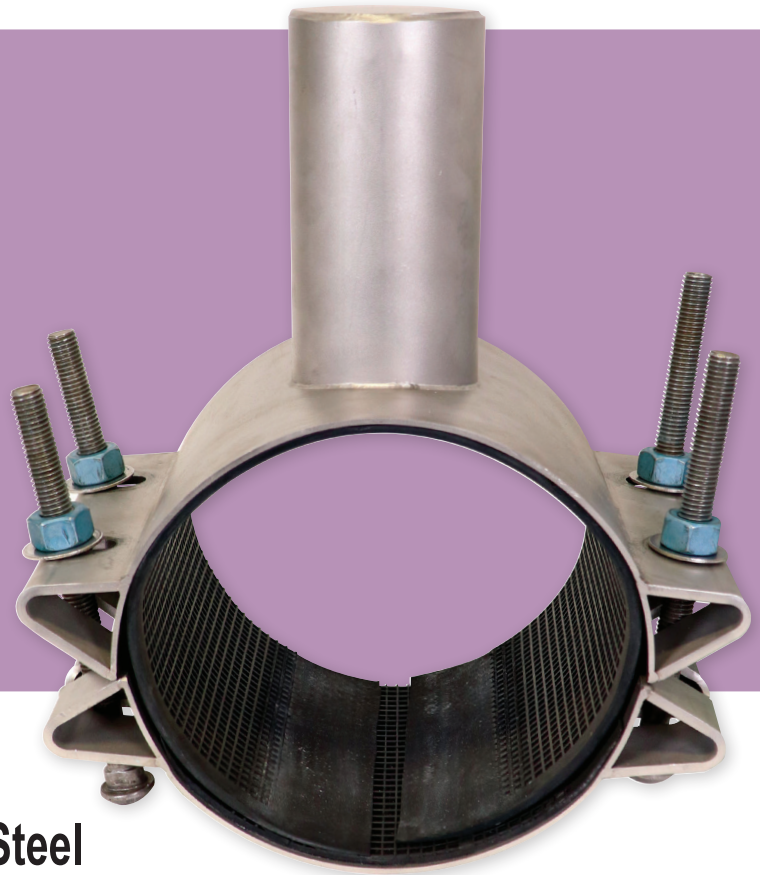




## TECK™ 403 Series

**Stainless-Steel Termination  
Sleeve for 6" and 8" Diameter**



### 8600 Series Two Piece Stainless-Steel

The TECK™ stainless steel termination sleeves are used to seal off and protect decommissioned corporation stops, in direct tap applications. TECK™ termination sleeves feature chemically passivated welds, Teflon coated nuts & NBR gasket. Now available for 6" and 8" diameter pipe that terminates valves from 1/2" to 1", with additional sizes to be offered shortly. Installation instructions are provided with each termination sleeve. Please read and follow instructions to ensure long lasting performance.

#### Features:

- All Sleeve components made of 18-8 type 304 stainless-steel
- Fully passivated for corrosion resistance
- Recommend sleeve bolt torque is 80 FT/LBS
- Conforms to ANSI/NSF Standard 61-8
- Rated for 250 PSI working pressure

#### Materials:

- Sleeve Body - 18-8 Type 304 stainless-steel
- Sleeve Waffle Gasket - NBR, meets NSF 61
- Sleeve Ring Gasket - NBR, meets NSF 61
- Bolts - 18-8 Type 304 stainless-steel, 5/8" Roll NC thread
- Nuts - 5/8-11 thread, Type 304 stainless-steel, heavy hex, Teflon coated to prevent galling
- Washers - 18-8 Type 304 stainless-steel
- Integrated dual bridge plates - 18-8 Type 304 stainless-steel

#### Ordering Information:

Nom. O.D.	O.D. Range	Sleeve Width	Terminates Valves	Outlet Size Code	Part Number	Price
6	6.50" - 7.30"	8"	1/2" to 1"	4	8600-0690-8-4	\$1,163.27
8	8.80" - 9.60"	8"	1/2" to 1"	4	8600-0920-8-4	\$1,203.51

