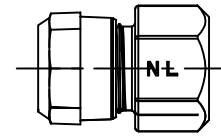


Cambridge Brass
P.O. Box 249
140 Orion Place
Cambridge, Ontario
Canada N1R 5V1
Tel: (519) 621-5520
Fax: (519) 621-8674
http://www.cambridgebrass.com



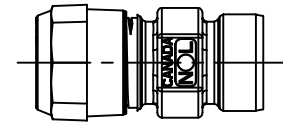
ADAPTER STYLE



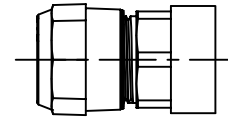
MODEL NO. 117NL

CB COMPRESSION x
FEMALE COPPER FLARE

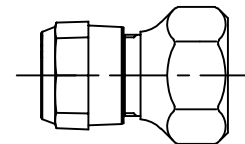
117NL-H1P1/117NL-H2P2/117NL-H3P2



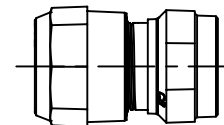
117NL-H3P1



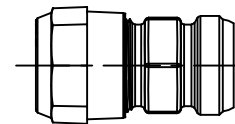
117NL-H3P3



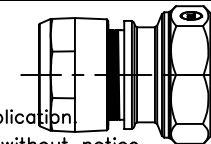
117NL-H3P4



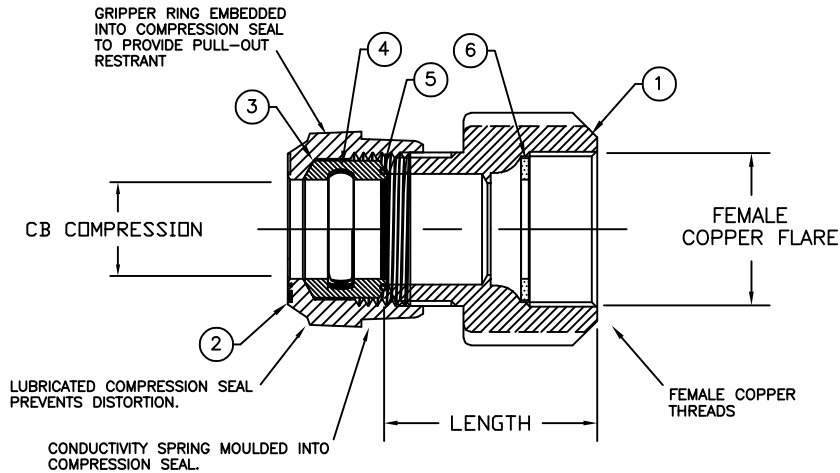
117NL-H4P4



117NL-H4P3



117NL-H6P6/117NL-H7P7



PARTS AND MATERIAL:

1. BODY: CAST BRASS, ALLOY C89833
2. COMPRSEION NUT: CAST BRASS, ALLOY C83600
3. COMPRESSION SEAL: EPDM
4. GRIPPER: STAINLESS STEEL, ALLOY 302
5. CONDUCTOR SPRING: BRASS
6. SEALING WASHER: COPPER

FEATURES

- CONFORMS TO AWWA C800 (ASTM B584 UNS C89833 FOR BRASS PARTS IN CONTACT WITH POTABLE WATER)
- CONFORMS TO ANSI/NSF 61-8
- CONFORMS TO ANSI/NSF 372 (COMPLIANT WITH US Safe Drinking Water Act. PL 111-380)
- BODY AND NUTS PROVIDE WRENCH FLATS FOR INSTALLATION
- 300PSI WORKING PRESSURE

Cambridge Brass considers the information in this submittal form to be correct at the time of publication. Item and option availability, including specifications, are subject to change without notice.

CATALOG NO.	CB COMPRESSION	FEMALE COPPER FLARE	LENGTH	APPROX. WT. LBS.
117NL-H1P1	1/2"	1/2"	2.22"	0.74
117NL-H2P2	5/8"	5/8"	1.47"	0.65
117NL-H3P1	3/4"	1/2"	2.08"	0.71
117NL-H3P2	3/4"	5/8"	1.61"	0.70
117NL-H3P3	3/4"	3/4"	1.79"	0.70
117NL-H3P4	3/4"	1"	2.00"	0.87
117NL-H4P3	1"	3/4"	2.29"	1.20
117NL-H4P4	1"	1"	2.03"	1.25
117NL-H6P6	1 1/2"	1 1/2"	2.79"	3.20
117NL-H7P7	2"	2"	3.19"	4.25

Submitted by: