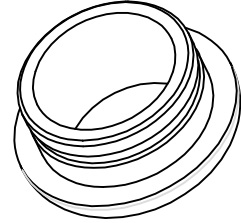
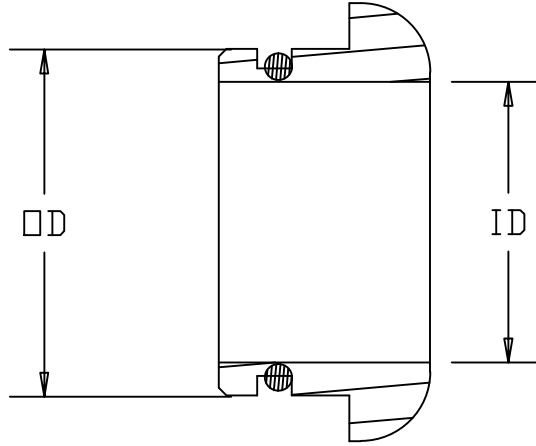


Cambridge Brass  
P.O. Box 249  
140 Orion Place  
Cambridge, Ontario  
Canada N1R 5V1  
Tel: (519) 621-5520  
Fax: (519) 621-8674  
<http://www.cambridgebrass.com>



MODEL NO. 85NL SERVICE LINE ACCESSORIES ADAPTER COPPER FLARE

FOR CTS COMPRESSION ENDS



PARTS AND MATERIAL:

1. ADAPTER COPPER FLARE BODY  
CAST BRASS, NO LEAD ALLOY C89833
2. O-RING  
NITRILE RUBBER

- CONFORMS TO AWWA C800 (ASTM B584 UNS C89833 FOR BRASS PARTS IN CONTACT WIT POTABLE WATER)
- CONFORMS TO ANSI/NSF 61-8
- CONFORMS TO ANSI/NSF 372 (COMPLIANT WITH US Safe Drinking Water Act. PL 111-380)
- 300PSI WORKING PRESSURE

Cambridge Brass considers the information in this submittal form to be correct at the time of publication. Item and option availability, including specifications, are subject to change without notice.

CATALOG NO.	SIZE		OD	ID	APPROX. WT. LBS.
85NL-3	3/4"		0.902	0.730	
85NL-4	1"		1.150	0.980	

Submitted by: