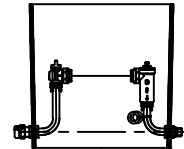


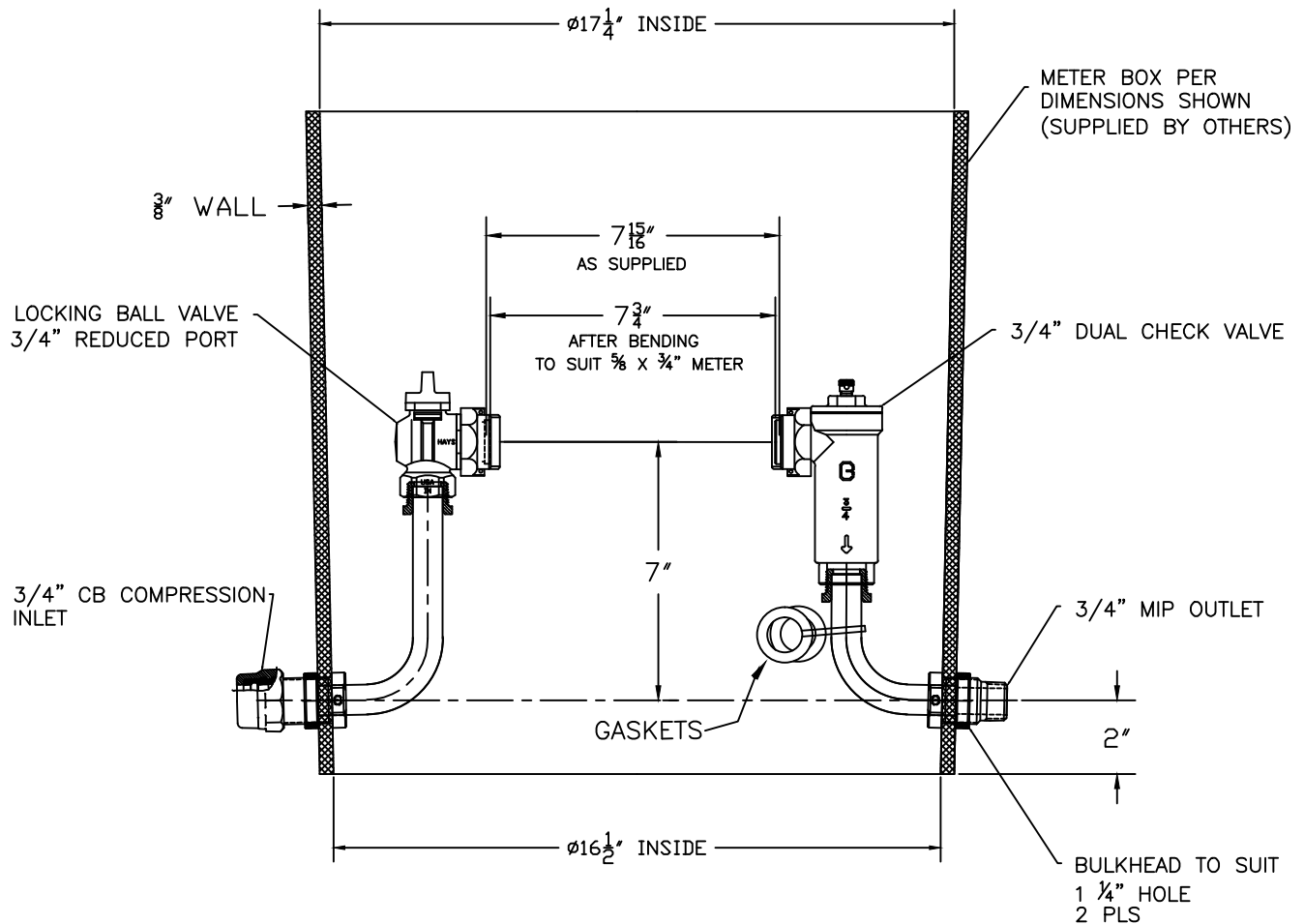
# SUBMITTAL INFORMATION

PIT SETTER 6052NL-207H3M3-VQ



ANGLE BALL VALVE X DUAL CHECK VALVE (AT METER)

3/4" CB COMPRESSION INLET X 3/4" MIP OUTLET



## FEATURES:

- ALL COMPONENTS CONFORM TO AWWA C800-05 (ASTM B-584, UNS NO C89833 FOR BRASS PARTS IN CONTACT WITH POTABLE WATER, AND ASTM B-62 AND B-584, UNS NO C83600 FOR ALL OTHER BRASS PARTS).
- ASSEMBLED WITH LEAD-FREE SOLDER.
- METER IS HELD RIGID FOR EASY INSTALLATION AND REMOVAL.
- PVC PIPE, SUPPORT AND BOX COVER NOT INCLUDED.
- SERVICE LINES ARE A MINIMUM OF 2" FROM PIT WALLS TO PREVENT "FROST JUMP".
- SADDLE NUTS HOLD THE METER IN PLACE FOR TIGHTENING.
- WHEN BOTTOM OF PIT IS BELOW FROST LINE, SERVICE AND METER FREEZE-UPS ARE GREATLY REDUCED OR ELIMINATED.
- FURNISHED WITH TWO EPDM RUBBER GASKETS FOR METER NUTS.
- FACTORY TESTED AT 90 PSI AIR PRESSURE UNDER WATER.
- ANGLE VALVE HAS PADLOCK WINGS FOR LOCKING VALVE IN CLOSED POSITION.

Cambridge Brass considers the information in this submittal form to be correct at the time of publication. Item and option availability, including specifications, are subject to change without notice.

Cambridge Brass  
P.O. Box 249, 140 Orion Place  
Cambridge, Ontario  
Canada N1R 5V1  
Tel: (519) 621-5520  
Fax: (519) 621-8674  
<http://www.cambridgebrass.com>

**C**AMBRIDGE  
BRASS

REV. A - AUGUST 2012

SUBMITTED BY: