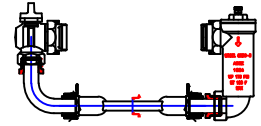


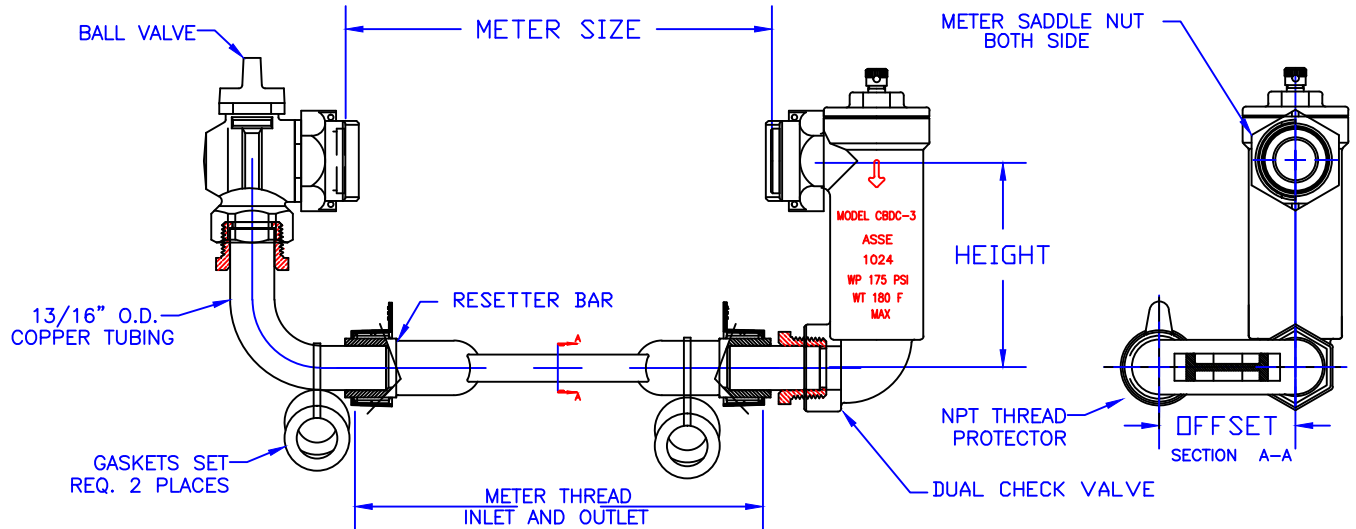
SUBMITTAL INFORMATION

LOW RISE RESETTER
90 DEG. ANGLE 6011NL-2N2N2-VQ



R/P ANGLE METER VALVE X DUAL CHECK VALVE, #2 METER

METER THREAD INLET AND OUTLET



LOW RISE RESETTER
CATALOG NUMBERS

CATALOG NUMBER	METER SIZE	INLET/OUTLET SIZE	HEIGHT	OFFSET	METER THREAD SIZE	APPROX. WT. LBS.
6011NL-2N2N2-VQ	5/8" x 3/4"	5/8" x 3/4"	3.75	2.5"	1" NPSM	

FEATURES:

- ALL COMPONENTS CONFORM TO AWWA C800-05 (ASTM B-584, UNS NO C89833 FOR BRASS PARTS IN CONTACT WITH POTABLE WATER, AND ASTM B-62 AND B-584, UNS NO C83600 FOR ALL OTHER BRASS PARTS).
- SADDLE NUTS HOLD THE METER IN PLACE FOR TIGHTENING.
- ASSEMBLED WITH LEAD-FREE SOLDER.
- FURNISHED WITH FOUR RUBBER GASKETS FOR METER NUTS AND BOTTOM BAR.
- LEAK TESTED - AIR AT 90 PSI UNDER WATER (EQUAL TO 300 PSI WATER)
- DESIGNED FOR USE WITH POTABLE WATER
- METER SETTER IS SHIPPED WITH PLASTIC METER IDLER
- CONFORMS TO ANSI/NSF 372 (COMPLIANT WITH US Safe Drinking Water Act. PL 111-380)
- 180 DEG. FAHRENHEIT MAXIMUM CONSTANT TEMPERATURE.
- 175 PSI MAXIMUM WORKING PRESSURE.
- CHECK VALVE IS ASSE 1024 APPROVED

Cambridge Brass considers the information in this submittal form to be correct at the time of publication. Item and option availability, including specifications, are subject to change without notice.

Cambridge Brass
P.O. Box 249, 140 Orion Place
Cambridge, Ontario
Canada N1R 5V1
Tel: (519) 621-5520
Fax: (519) 621-8674
<http://www.cambridgebrass.com>



REV. B - MAY 2014

SUBMITTED BY: