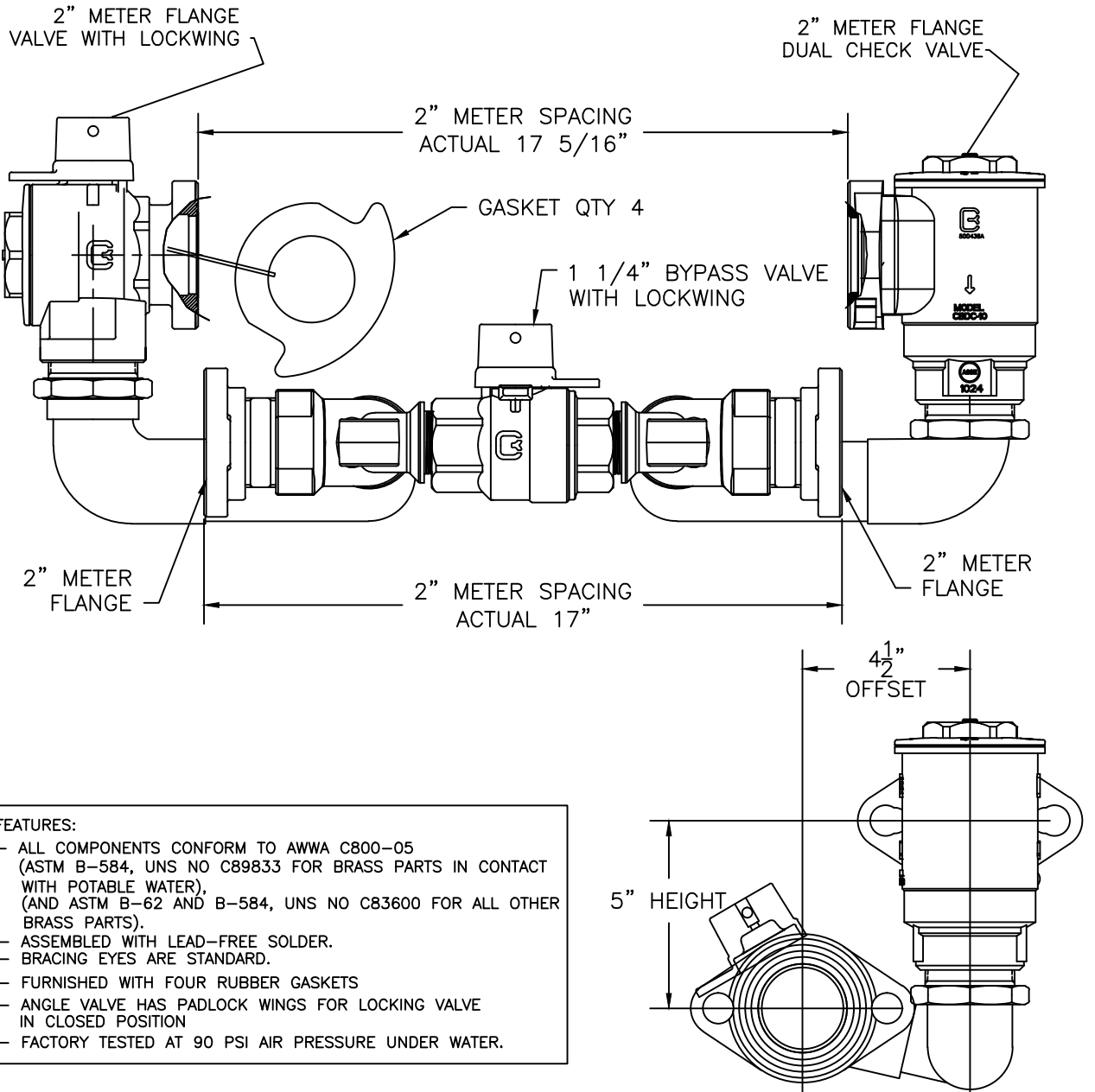


SUBMITTAL INFORMATION

OFFSET RESETTER 6010NL-705MF7MF7-UQB

ANGLE BALL VALVE X ANGLE DUAL CHECK VALVE (AT 2" METER)

2" METER FLANGE X 2" METER FLANGE WITH BYPASS



FEATURES:

- ALL COMPONENTS CONFORM TO AWWA C800-05 (ASTM B-584, UNS NO C89833 FOR BRASS PARTS IN CONTACT WITH POTABLE WATER), (AND ASTM B-62 AND B-584, UNS NO C83600 FOR ALL OTHER BRASS PARTS).
- ASSEMBLED WITH LEAD-FREE SOLDER.
- BRACING EYES ARE STANDARD.
- FURNISHED WITH FOUR RUBBER GASKETS
- ANGLE VALVE HAS PADLOCK WINGS FOR LOCKING VALVE IN CLOSED POSITION
- FACTORY TESTED AT 90 PSI AIR PRESSURE UNDER WATER.

Cambridge Brass considers the information in this submittal form to be correct at the time of publication. Item and option availability, including specifications, are subject to change without notice.

END VIEW

Cambridge Brass
 P.O. Box 249, 140 Orion Place
 Cambridge, Ontario
 Canada N1R 5V1
 Tel: (519) 621-5520
 Fax: (519) 621-8674
<http://www.cambridgebrass.com>



REV. A - SEPT 2012

SUBMITTED BY: