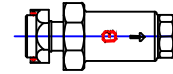


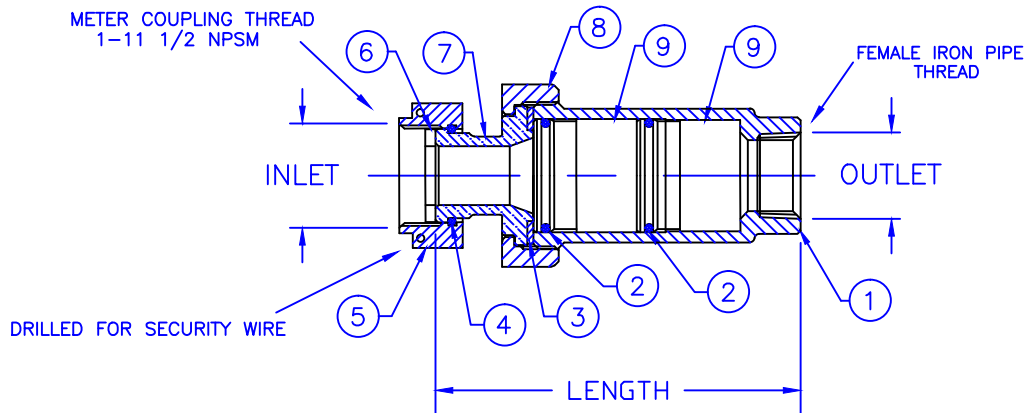
Cambridge Brass  
P.O. Box 249  
140 Orion Place  
Cambridge, Ontario  
Canada N1R 5V1  
Tel: (519) 621-5520  
Fax: (519) 621-8674  
<http://www.cambridgebrass.com>



MODEL NO. 520NL

METER SWIVEL NUT x  
FEMALE IRON PIPE

STRAIGHT DUAL  
CARTRIDGE CHECK VALVE



PARTS AND MATERIAL:

1. BODY: NO LEAD CAST BRASS ALLOY C89833
2. O-RING: NITRILE RUBBER
3. WASHER: NITRILE RUBBER
4. RETAINER RING: PHOSPHOR BRONZE
5. METER SWIVEL NUT: CAST BRASS, ALLOY C83600
6. METER GASKET: EPDM RUBBER
7. ENDBODY: NO LEAD CAST BRASS ALLOY C89833
8. RETAINER NUT: CAST BRASS, ALLOY C84400
9. CHECK CARTRIDGE: ACETAL PLASTIC, S.S. 304, NITRILE RUBBER

FEATURES:

- CONFORMS TO AWWA C800 (ASTM B584 UNS C89833 FOR ALL BRASS PARTS IN CONTACT WITH POTABLE WATER)
- CONFORMS TO ANSI/NSF 61-8
- CONFORMS TO ANSI/NSF 372 (COMPLIANT WITH US Safe Drinking Water Act. PL 111-380)
- BODY AND NUTS PROVIDE WRENCH FLATS FOR INSTALLATION
- CARTRIDGES ARE IN LINE ACCESSIBLE THROUGH CAP
- 175PSI MAX. WORKING PRESSURE
- 180 DEG. FAHRENHEIT MAX. WORKING TEMPERATURE
- ASSE 1024 APPROVED

Cambridge Brass considers the information in this submittal form to be correct at the time of publication. Item and option availability, including specifications, are subject to change without notice.

VALVE SIZE	CATALOG NO.	INLET METER SIZE	OUTLET F.I.P.	LENGTH	APPROX. WT. LBS.
3/4"	520NL-T3F3	5/8"x3/4" OR 3/4"	3/4"	4.67"	1.8

Submitted by: