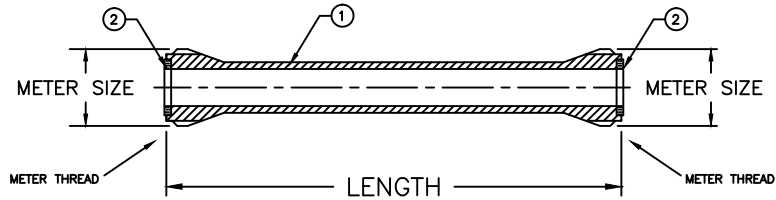
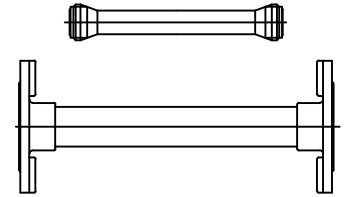


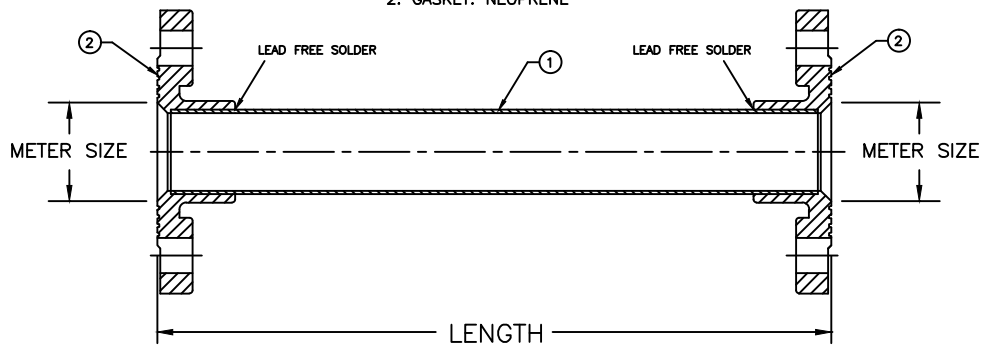
SUBMITTAL INFORMATION

METER IDLERS



5/8" TO 1" METER IDLER CONFIGURATION

PARTS AND MATERIAL:
 1. IDLER BAR: PVC
 2. GASKET: NEOPRENE



1 1/2" & 2" METER IDLER CONFIGURATION

PARTS AND MATERIAL:
 1. IDLER BAR: COPPER TUBE
 2. FLANGE: CAST BRASS, ALLOY C89833

FEATURES:

- CONFORMS TO AWWA C800 (ASTM B584 UNS C89833 FOR ALL BRASS PARTS IN CONTACT WITH POTABLE WATER)
- CONFORMS TO ANSI/NSF 61-8
- CONFORMS TO ANSI/NSF 372 (COMPLIANT WITH US Safe Drinking Water Act. PL 111-380)
- BODY AND NUTS PROVIDE WRENCH FLATS FOR INSTALLATION
- 300PSI WORKING PRESSURE

Cambridge Brass considers the information in this submittal form to be correct at the time of publication. Item and option availability, including specifications, are subject to change without notice.

PART NO.	REPLACES METER SIZE	METER THREAD/CONNECTION	LENGTH
450-1	5/8"	3/4-14 NPSM	7.65"
450-2	5/8" x 3/4"	1-11 1/2 NPSM	7.65"
450-3	3/4"	1-11 1/2 NPSM	9.15"
450-4	1"	1 1/4-11 1/2 NPSM	10.90"
450NL-6	1 1/2"	METER FLANGE	13.00"
450NL-7	2"	METER FLANGE	17.00"

Cambridge Brass
 P.O. Box 249, 140 Orion Place
 Cambridge, Ontario
 Canada N1R 5V1
 Tel: (519) 621-5520
 Fax: (519) 621-8674
<http://www.cambridgebrass.com>



SUBMITTED BY: