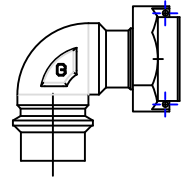


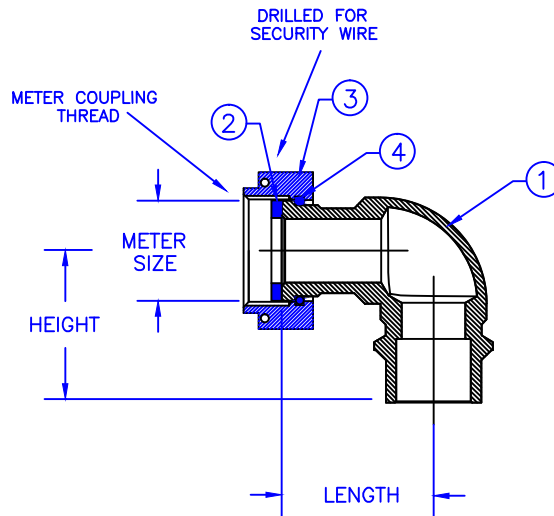
Cambridge Brass  
P.O. Box 249  
140 Orion Place  
Cambridge, Ontario  
Canada N1R 5V1  
Tel: (519) 621-5520  
Fax: (519) 621-8674  
<http://www.cambridgebrass.com>



MODEL NO. 405NL

METER SWIVEL NUT x  
SOLDER

ANGLE METER COUPLING



PARTS AND MATERIAL:

1. COUPLING BODY: CAST BRASS, ALLOY C89833
2. SEALING WASHER: EPDM RUBBER
3. METER SWIVEL NUT: CAST BRASS, ALLOY C83600
4. RETAINING RING: PHOSPHOR BRONZE WIRE

FEATURES:

- MANUFACTURED IN COMPLIANCE WITH AWWA STANDARD C800-05 (ASTM- 62 AND ASTM B-584, UNS NO C83600-85-5-5-5).
- CONFORMS TO AWWA C700 FOR METER THREADS.
- CONFORMS TO ANSI/NSF 61-8
- CONFORMS TO ANSI/NSF 372 (COMPLIANT WITH US Safe Drinking Water Act. PL 111-380)
- BODY PROVIDES WRENCH FLATES FOR PROPER INSTALLATION.
- 300 PSI WORKING PRESSURE.

Cambridge Brass considers the information in this submittal form to be correct at the time of publication. Item and option availability, including specifications, are subject to change without notice.

CATALOG NO.	METER SIZE	METER THREAD	SOLDER SIZE	HEIGHT	LENGTH	APPROX. WT. LBS.
405NL-T3S3	5/8"x3/4" & 3/4"	1" NPSM	3/4"	1.79"	1.79"	1.1

Submitted by: