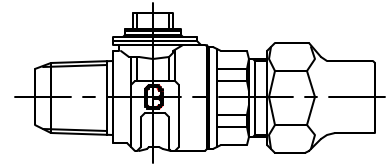


Cambridge Brass
P.O. Box 249
140 Drlan Place
Cambridge, Ontario
Canada N1R 5V1
Tel: (519) 621-5520
Fax: (519) 621-8874
http://www.cambridgebrass.com

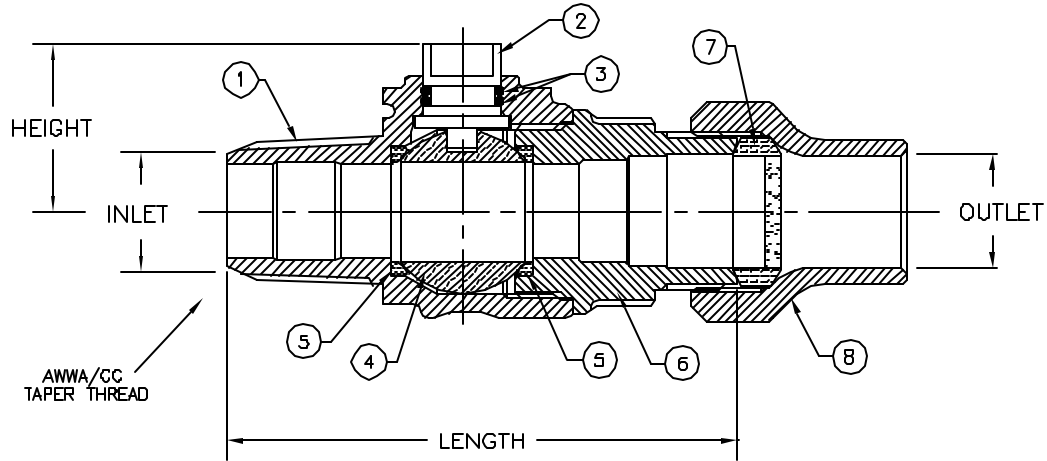


MODEL NO. 301NL

AWWA (CC) x HAYSTITE

CORPORATION MAIN STOP
BALL STYLE

AWWA/CC TAPER THREAD INLET BY HAYSTITE FOR COPPER OR PLASTIC TUBING (CTS) OUTLET



PARTS AND MATERIAL:

- 1. VALVE BODY: CAST BRASS, ALLOY C89833
- 2. STEM: STAINLESS STEEL, TYPE 303
- 3. O-RING: NITRILE RUBBER
- 4. BALL: CAST BRASS, ALLOY C89833
- 5. SEATS: TEFLON
- 6. ENDBODY: CAST BRASS, ALLOY C89833
- 7. COMPRESSION SEAL: NITRILE RUBBER, WITH GRIT
- 8. TAILNUT: CAST BRASS, ALLOY C8360D

FEATURES:

- ALL COMPONENTS CONFORM TO AWWA STANDARD C800-05 (ASTM 584, UNS NO C89833 FOR BRASS PARTS IN CONTACT WITH POTABLE WATER, AND ASTM B-62 AND ASTM B-584 UNS NO C8360D FOR ALL OTHER PARTS).
- 300 PSI WORKING PRESSURE.
- BLOWOUT PROOF DESIGN.
- BODY PROVIDES LARGE, RUGGED FLATS FOR PROPER INSTALLATION.
- FULL 360 DEGREE ROTATION.

Cambridge Brass considers the information in this submittal form to be correct at the time of publication. Item and option availability, including specifications, are subject to change without notice.

VALVE SIZE	CATALOG NO.	INLET AWWA / CC	OUTLET HAYSTITE	LENGTH	HEIGHT	APPROX. WT. LBS.
3/4"	301NL-A3J3	3/4"	3/4"	4.05"	1.33"	1.7
1"	301NL-A4J4	1"	1"	4.59"	1.51"	

Submitted by: