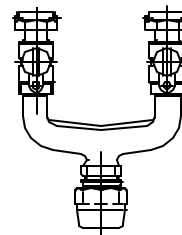


Cambridge Brass  
 P.O. Box 249  
 140 Orion Place  
 Cambridge, Ontario  
 Canada N1R 5V1  
 Tel: (519) 621-5520  
 Fax: (519) 621-8674  
 http://www.cambridgebrass.com



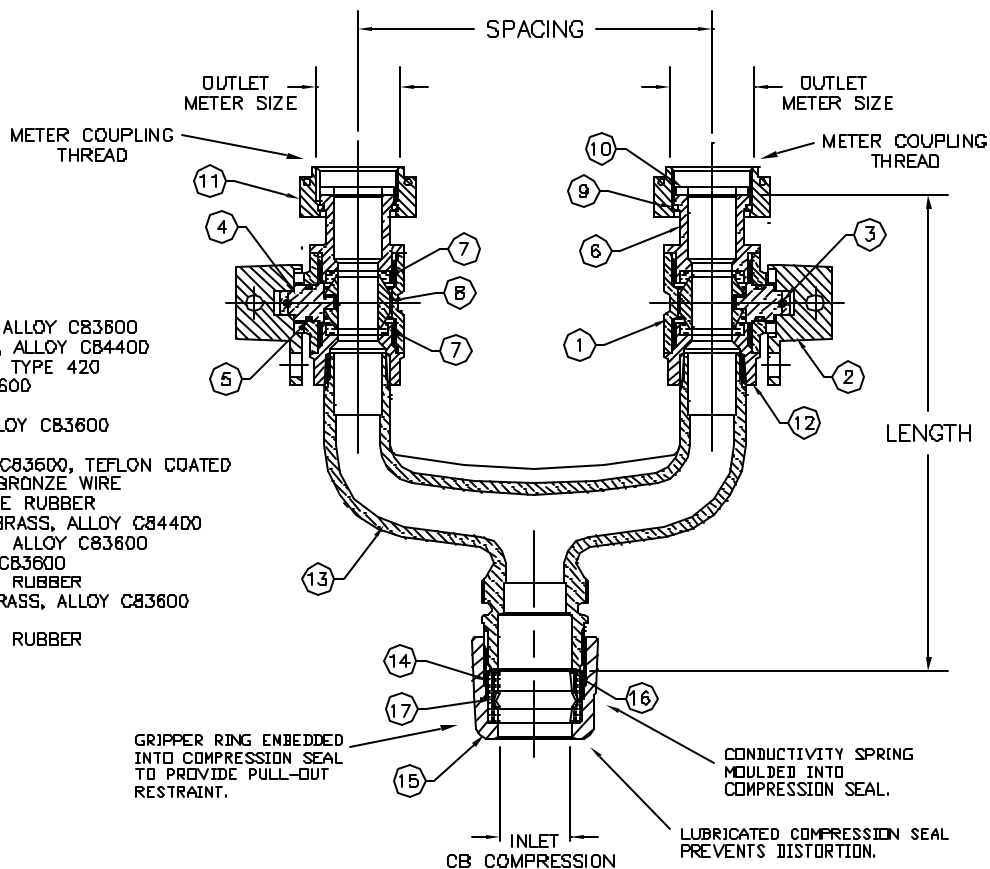
MODEL NO. 274

CB COMPRESSION x  
 METER SWIVEL NUT

DOUBLE CURB  
 REDUCED PORT

**PARTS AND MATERIAL:**

1. VALVE BODY: CAST BRASS, ALLOY C83600
2. LOCKING CAP: CAST BRASS, ALLOY C84400
3. CAP PIN: STAINLESS STEEL, TYPE 420
4. STEM: COPPER, ALLOY C83600
5. O-RING: NITRILE RUBBER
6. ENDBODY: CAST BRASS, ALLOY C83600
7. SEATS: NITRILE RUBBER
8. BALL: CAST BRASS, ALLOY C83600, TEFLON COATED
9. RETAINER RING: PHOSPHOR BRONZE WIRE
10. SEALING WASHER: NEOPRENE RUBBER
11. METER SWIVEL NUT: CAST BRASS, ALLOY C84400
12. FIP ENDBODY: CAST BRASS, ALLOY C83600
13. BODY: CAST BRASS, ALLOY C83600
14. COMPRESSION SEAL: NITRILE RUBBER
15. COMPRESSION NUT: CAST BRASS, ALLOY C83600
16. CONDUCTOR SPRING: BRASS
17. COMPRESSION SEAL: NITRILE RUBBER



**FEATURES:**

- MANUFACTURED IN COMPLIANCE WITH AWWA STANDARD C800.
- PADLOCK WING FOR LOCKING VALVES IN CLOSED POSITION.
- METER GASKETS PROVIDED.
- METER THREADS CONFORM TO AWWA C700.

**ORDERING INFORMATION:**

FULL 360 ROTATION = ADD "R" TO END OF CATALOG NO.  
 HANDLE = ADD "H" TO END OF CATALOG NO.

Cambridge Brass considers the information in this submittal form to be correct at the time of publication. Item and option availability, including specifications, are subject to change without notice.

CATALOG NO.	INLET CB COMP.	OUTLET METER SIZE	SPACING	LENGTH	APPROX. WT. LBS.
274-H4T3	1"	5/8"x3/4" & 3/4"	5.62"	7.75"	
274-H4T36500	1"	5/8"x3/4" & 3/4"	6.50"	6.64"	
274-H4T37500	1"	5/8"x3/4" & 3/4"	7.50"	6.69"	

Submitted by: