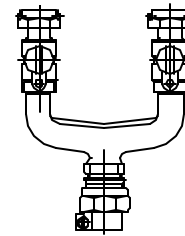


Cambridge Brass
 P.O. Box 249
 140 Orion Place
 Cambridge, Ontario
 Canada N1R 5V1
 Tel: (519) 621-5520
 Fax: (519) 621-8674
 http://www.cambridgebrass.com



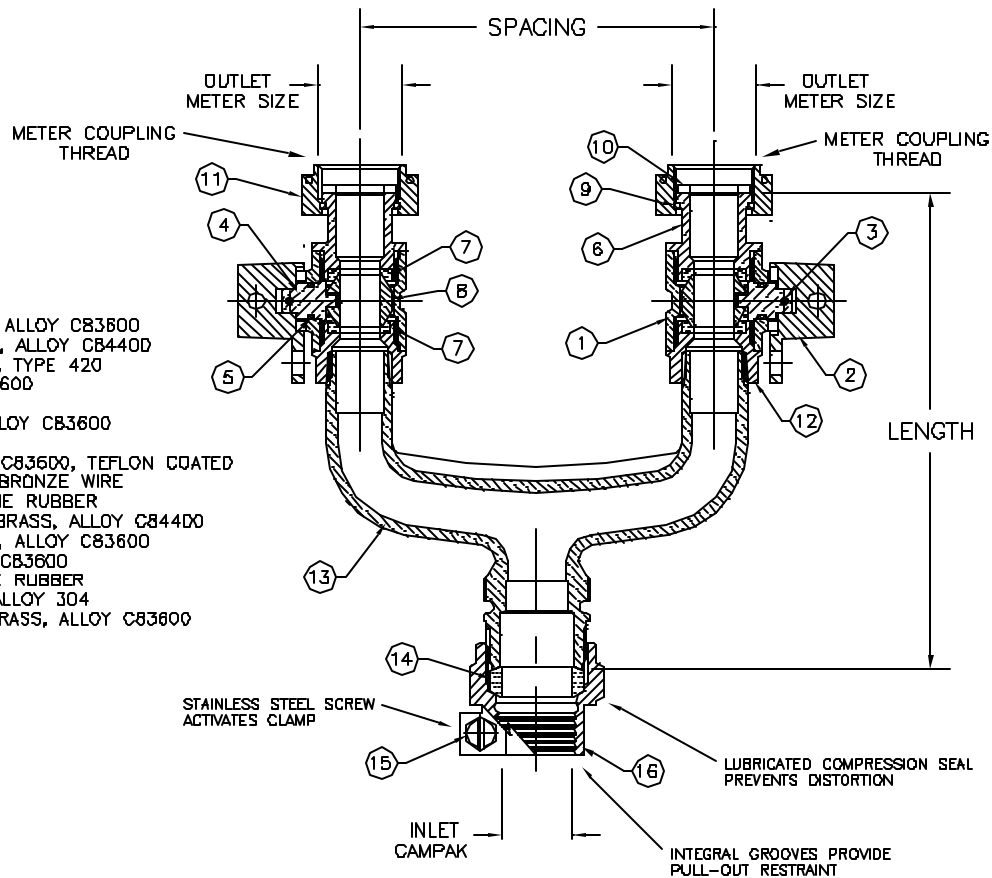
MODEL NO. 274

CAMPAK x METER SWIVEL NUT

DOUBLE CURB
 REDUCED PORT

PARTS AND MATERIAL:

1. VALVE BODY: CAST BRASS, ALLOY C83600
2. LOCKING CAP: CAST BRASS, ALLOY C8440D
3. CAP PIN: STAINLESS STEEL, TYPE 420
4. STEM: COPPER, ALLOY C8360D
5. O-RING: NITRILE RUBBER
6. ENDBODY: CAST BRASS, ALLOY C83600
7. SEATS: NITRILE RUBBER
8. BALL: CAST BRASS, ALLOY C8360D, TEFLON COATED
9. RETAINER RING: PHOSPOR BRONZE WIRE
10. SEALING WASHER: NEOPRENE RUBBER
11. METER SWIVEL NUT: CAST BRASS, ALLOY C8440D
12. FIP ENDBODY: CAST BRASS, ALLOY C83600
13. BODY: CAST BRASS, ALLOY C83600
14. COMPRESSION SEAL: NITRILE RUBBER
15. SCREW: STAINLESS STEEL, ALLOY 304
16. COMPRESSION NUT: CAST BRASS, ALLOY C83600



FEATURES:

- MANUFACTURED IN COMPLIANCE WITH AWWA STANDARD C800.
- PADLOCK WING FOR LOCKING VALVES IN CLOSED POSITION.
- METER GASKETS PROVIDED.
- METER THREADS COMFORM TO AWWA C700.

ORDERING INFORMATION:

FULL 360 ROTATION = ADD "R" TO END OF CATALOG NO.
 HANDLE = ADD "H" TO END OF CATALOG NO.

Cambridge Brass considers the information in this submittal form to be correct at the time of publication. Item and option availability, including specifications, are subject to change without notice.

CATALOG NO.	INLET CAMPAK	OUTLET METER SIZE	SPACING	LENGTH	APPROX. WT. LBS.
274-B4T3	1"	5/8"x3/4" & 3/4"	5.62"	7.75"	
274-B4T36500	1"	5/8"x3/4" & 3/4"	6.50"	6.64"	
274-B4T37500	1"	5/8"x3/4" & 3/4"	7.50"	6.69"	

Submitted by: