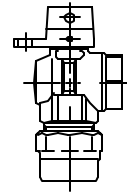


Cambridge Brass
P.O. Box 249
140 Orion Place
Cambridge, Ontario
Canada N1R 5V1
Tel: (519) 621-5520
Fax: (519) 621-8674
http://www.cambridgebrass.com



MODEL NO. 214

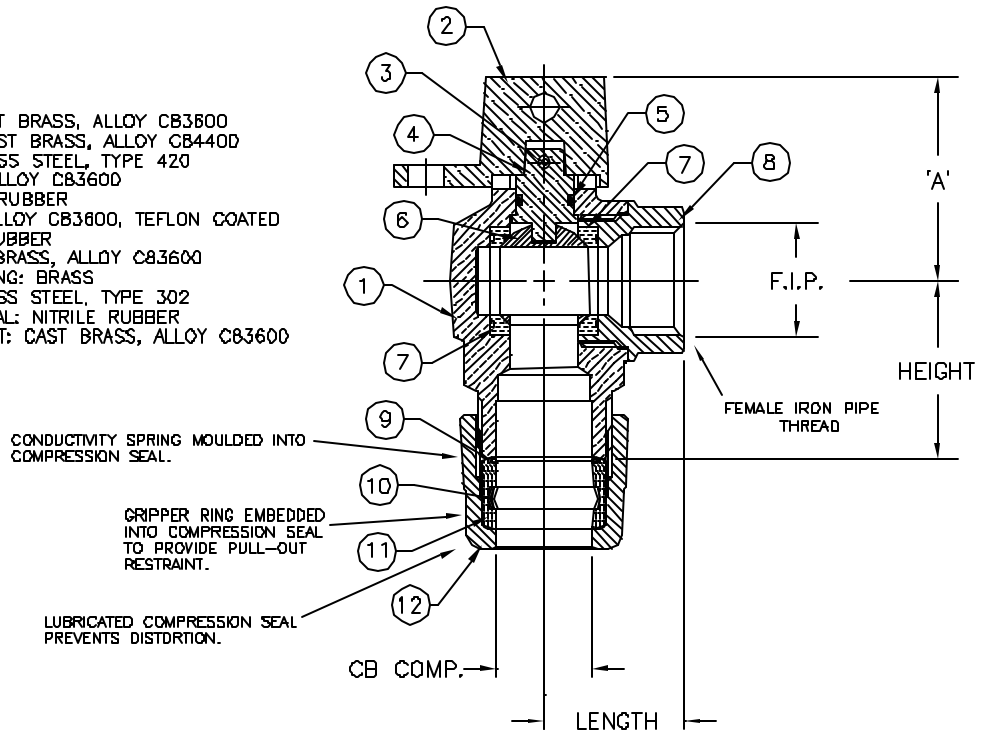
CB COMPRESSION x FEMALE IRON PIPE

ANGLE METER STOP – BALL STYLE
REDUCED PORT WITH LOCKWING

FOR COPPER OR PLASTIC TUBING (CTS) x THREADED PIPE

PARTS AND MATERIAL:

1. VALVE BODY: CAST BRASS, ALLOY CB3600
2. LOCKING CAP: CAST BRASS, ALLOY CB440D
3. CAP PIN: STAINLESS STEEL, TYPE 420
4. STEM: COPPER, ALLOY CB3600
5. O-RING: NITRILE RUBBER
6. BALL: COPPER, ALLOY CB3600, TEFLON COATED
7. SEATS: NITRILE RUBBER
8. ENDPiece: CAST BRASS, ALLOY CB3600
9. CONDUCTOR SPRING: BRASS
10. GRIPPER: STAINLESS STEEL, TYPE 302
11. COMPRESSION SEAL: NITRILE RUBBER
12. COMPRESSION NUT: CAST BRASS, ALLOY CB3600



FEATURES:

- MANUFACTURED IN COMPLIANCE WITH AWWA STANDARD C800-05 (ASTM B-62 AND ASTM B-584, UNS NO C83600-85-5-5-5).
- CSA CLASSIFIED TO ANSI/NSF STANDARD 61-8.
- FLOW CAN BE IN EITHER DIRECTION
- BLOWOUT PROOF DESIGN
- 200 PSI WORKING PRESSURE
- HOLE FOR ATTACHING HANDLE IS PROVIDED IN CAP.
- PADLOCK WING FOR LOCKING VALVE IN CLOSED POSITION.

ORDERING INFORMATION:

FULL 360 ROTATION = ADD "R" TO END OF CATALOG NO.
HANDLE = ADD "H" TO END OF CATALOG NO.

Cambridge Brass considers the information in this submittal form to be correct at the time of publication. Item and option availability, including specifications, are subject to change without notice.

VALVE SIZE	CATALOG NO.	CB COMP.	F.I.P.	LENGTH	HEIGHT	'A'	APPROX. WT. LBS.
5/8"	214-H3F3	3/4"	3/4"	1.35"	1.68"	1.93"	

Submitted by: