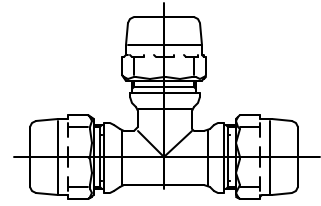


Cambridge Brass  
P.O. Box 249  
140 Orion Place  
Cambridge, Ontario  
Canada N1R 5V1  
Tel: (519) 621-5520  
Fax: (519) 621-8674  
http://www.cambridgebrass.com

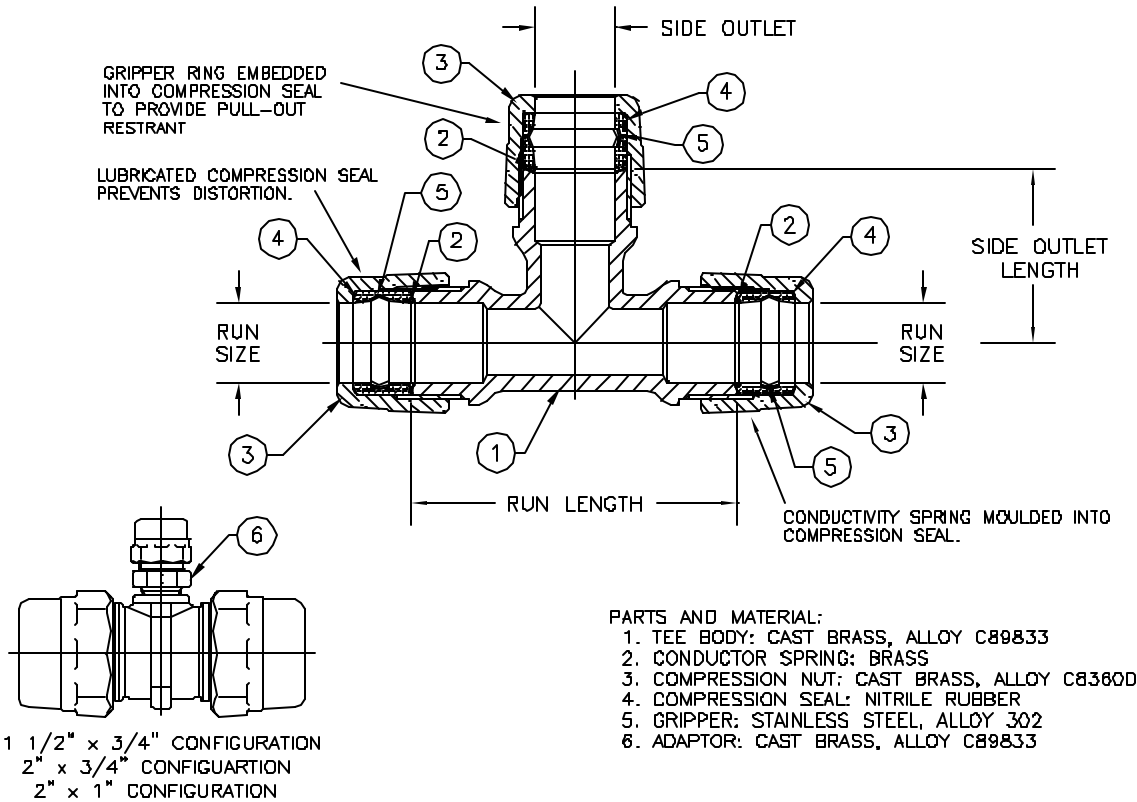


MODEL NO. 150NL

CB COMPRESSION x CB COMPRESSION  
x CB COMPRESSION

SERVICE TEE

FOR COPPER OR PLASTIC (CTS) TUBING



**FEATURES:**  
- ALL COMPONENTS CONFORM TO AWWA STANDARD C800-05 (ASTM B-584 UNS NO C89833 FOR BRASS PARTS IN CONTACT WITH POTABLE WATER, AND ASTM B-62 AND B-584 UNS NO C83600 FOR ALL OTHER BRASS PARTS).  
- CSA CLASSIFIED TO ANSI/NSF STANDARD 61-8.

Cambridge Brass considers the information in this submittal form to be correct at the time of publication. Item and option availability, including specifications, are subject to change without notice.

| TEE SIZE      | CATALOG NO. | RUN CB COMP. (BOTH ENDS) | SIDE OUTLET CB COMP. | RUN LENGTH | SIDE OUTLET LENGTH | APPROX. WT. LBS. |
|---------------|-------------|--------------------------|----------------------|------------|--------------------|------------------|
| 3/4"          | 150NL-H3H3  | 3/4"                     | 3/4"                 | 3.66"      | 1.96"              | 1.9              |
| 3/4" x 1"     | 150NL-H3H4  | 3/4"                     | 1"                   | 3.66"      | 1.94"              | 2.3              |
| 1"            | 150NL-H4H4  | 1"                       | 1"                   | 5.10"      | 2.54"              | 3.6              |
| 1 1/2" x 3/4" | 150NL-H6H3  | 1 1/2"                   | 3/4"                 | 3.40"      | 2.60"              | 4.0              |
| 1 1/2"        | 150NL-H6H6  | 1 1/2"                   | 1 1/2"               | 4.75"      | 2.38"              | 4.4              |
| 2" x 3/4"     | 150NL-H7H3  | 2"                       | 3/4"                 | 4.15"      | 2.65"              | 5.2              |
| 2" x 1"       | 150NL-H7H4  | 2"                       | 1"                   | 4.15"      | 3.00"              | 5.6              |
| 2"            | 150NL-H7H7  | 2"                       | 2"                   | 7.38"      | 3.69"              | 6.9              |

Submitted by: