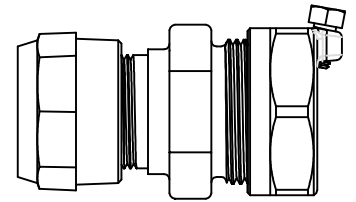


Cambridge Brass
P.O. Box 249
140 Orion Place
Cambridge, Ontario
Canada N1R 5V1
Tel: (519) 621-5520
Fax: (519) 621-8674
http://www.cambridgebrass.com

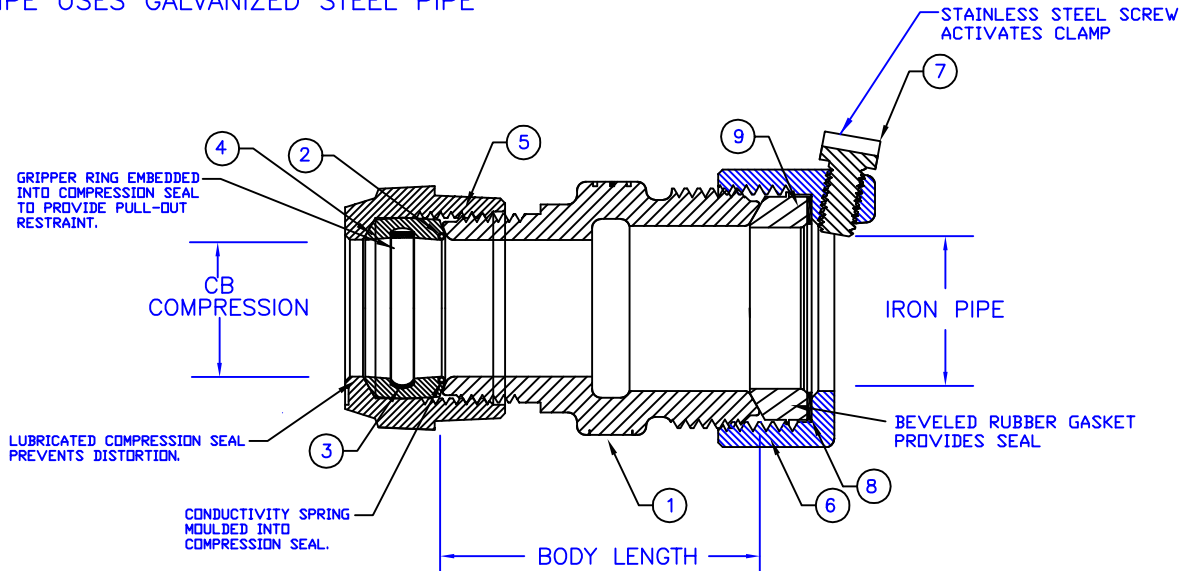


MODEL NO. 119NL

CB COMPRESSION X IRON PIPE

COUPLING – FULL BORE

CB COMPRESSION USES COPPER OR PLASTIC TUBING PER ASTM D2737 OR F877 (CTS)
IRON PIPE USES GALVANIZED STEEL PIPE



- PARTS AND MATERIAL:
1. COUPLING BODY: CAST BRASS, CDA ALLOY C89833
 2. CONDUCTOR SPRING: BRASS
 3. GRIPPER: STAINLESS STEEL, TYPE 302
 4. COMPRESSION SEAL: EPDM RUBBER
 5. COMPRESSION NUT: CAST BRASS, ALLOY C83600
 6. IRON NUT: CAST BRASS, CDA ALLOY C83600
 7. SCREW: STAINLESS STEEL, ALLOY 304
 8. ANTI-FRICTION WASHER: HIGH DENSITY POLYETHYLENE (HDPE)
 9. GASKET: RUBBER COMPOUND NSF-61

FEATURES:

- CONFORMS TO AWWA C800 (ASTM B584 UNS C89833 FOR ALL BRASS PARTS IN CONTACT WITH POTABLE WATER)
- CONFORMS TO ANSI/NSF 61-8
- CONFORMS TO ANSI/NSF 372 (COMPLIANT WITH US Safe Drinking Water Act. PL111-380)
- BODY PROVIDES WRENCH FLATS FOR INSTALLATION
- 300 PSI WORKING PRESSURE

Cambridge Brass considers the information in this submittal form to be correct at the time of publication. Item and option availability, including specifications, are subject to change without notice.

CATALOG NO.	CB COMPRESSION	IRON PIPE SIZE	BODY LENGTH	APPROX. WT. LBS.
119NL-H3IP1	3/4"	1/2"	1.95"	
119NL-H3IP3	3/4"	3/4"	2.10"	
119NL-H3IP4	3/4"	1"	2.41"	
119NL-H4IP3	1"	3/4"	2.12"	
119NL-H4IP4	1"	1"	2.41"	

Submitted by: