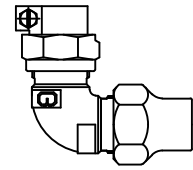


Cambridge Brass
P.O. Box 249
140 Orion Place
Cambridge, Ontario
Canada N1R 5V1
Tel: (519) 621-5520
Fax: (519) 621-8674
http://www.cambridgebrass.com

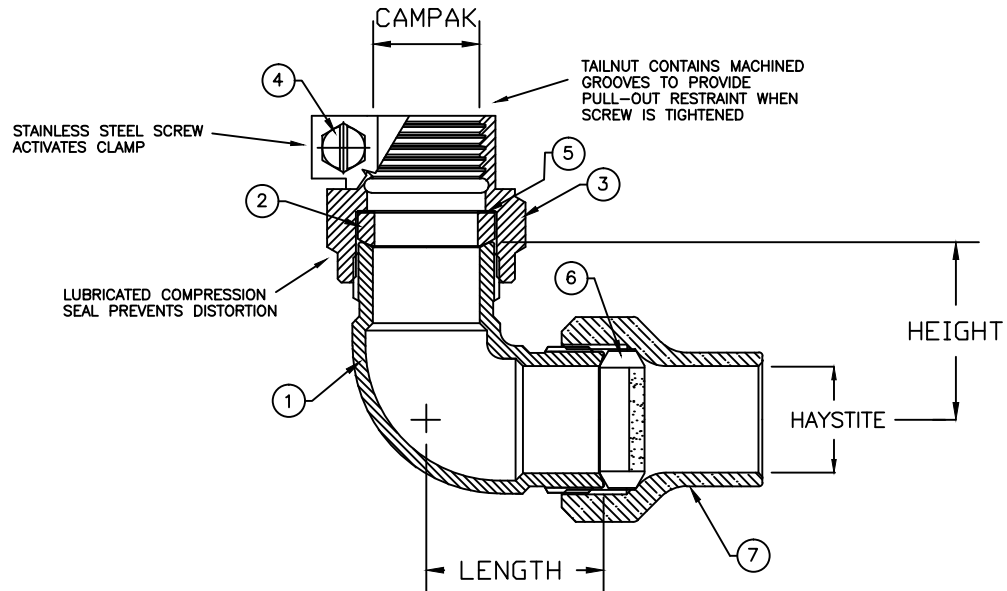


MODEL NO. 105NL

CAMPAK PVC X HAYSTITE

ELL COUPLING

FOR PVC PLASTIC TUBING X COPPER OR PLASTIC TUBING (CTS)



PARTS AND MATERIAL:

1. ELBOW BODY: NO LEAD CAST BRASS, ALLOY C89833
2. COMPRESSION SEAL: NITRILE RUBBER
3. CAMPAK NUT
4. STAINLESS STEEL SCREW
5. ANTI-FRICTION RING: HDPE
6. COMPRESSION SEAL: NITRILE RUBBER, WITH GRIT
7. HAYSTITE NUT: CAST BRASS, ALLOY C83600

FEATURES:

5. HAYSTITE NUT: CAST BRASS, ALLOY C83600
- ALL COMPONENTS CONFORM TO AWWA C800 (ASTM B-584 UNS NO C89833 FOR BRASS PARTS IN CONTACT WITH POTABLE WATER, AND ASTM B-62 AND B-584 UNS NO C83600 FOR ALL OTHER BRASS PARTS).
 - CSA CLASSIFIED TO ANSI/NSF STANDARD 61-8.
 - CONFORMS TO ANSI/NSF 372 (COMPLIANT WITH US Safe Drinking Water Act. PL 111-380)
 - BODY PROVIDES LARGE, RUGGED WRENCH FLATS FOR PROPER INSTALLATION.
 - YOKE ELL COUPLINGS MAY BE USED ON EITHER END OF THE YOKE.
 - 300 PSI WORKING PRESSURE

Cambridge Brass considers the information in this submittal form to be correct at the time of publication. Item and option availability, including specifications, are subject to change without notice.

ELL COUPLING SIZE	CATALOG NO.	CAMPAK PVC BOTH ENDS	LENGTH	HEIGHT	APPROX. WT. LBS.
3/4"	105NL-PJ3J3	3/4"	1.50"	1.50"	
1"	105NL-PJ4J4	1"	1.79"	1.79"	

Submitted by: