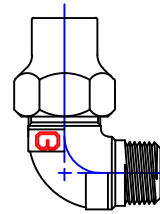


Cambridge Brass
P.O. Box 249
140 Orion Place
Cambridge, Ontario
Canada N1R 5V1
Tel: (519) 621-5520
Fax: (519) 621-8674
<http://www.cambridgebrass.com>

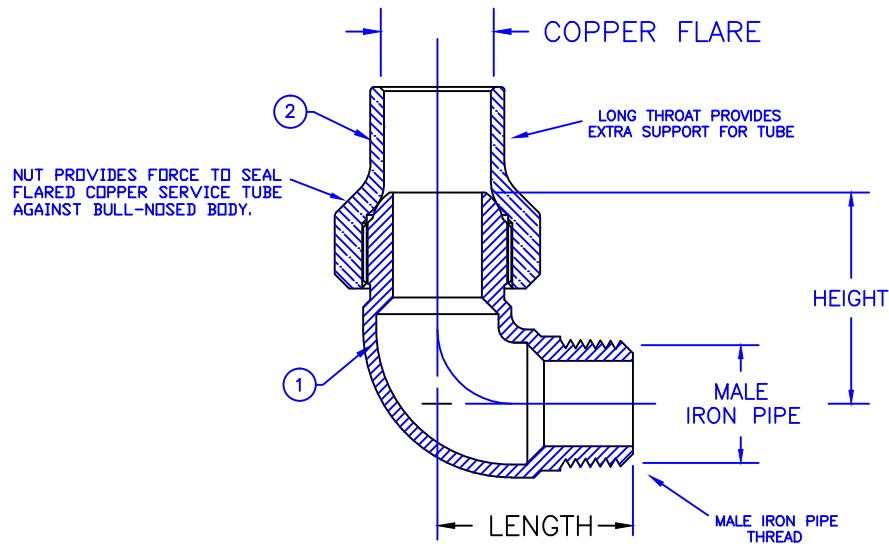


MODEL NO. 105NL

COPPER FLARE x MALE IRON PIPE

ELL COUPLING

COPPER FLARE FOR COPPER TUBING BY THREADED PIPE



PARTS AND MATERIAL:
1. ELBOW BODY: CAST BRASS, ALLOY C89833
2. NUT: CAST BRASS, ALLOY C83600

FEATURES:
- ALL COMPONENTS CONFORM TO AWWA C800-05
(ASTM B-584 UNS NO C89833 FOR BRASS PARTS IN CONTACT WITH POTABLE WATER, AND ASTM B-62 AND B-584 UNS NO C83600 FOR ALL OTHER BRASS PARTS).
- CONFORMS TO ANSI/NSF 61-8
- CONFORMS TO ANSI/NSF 372 (COMPLIANT WITH US Safe Drinking Water Act. PL 111-380)
- 300 PSI WORKING PRESSURE

Cambridge Brass considers the information in this submittal form to be correct at the time of publication.
Item and option availability, including specifications, are subject to change without notice.

| ELL COUPLING SIZE | CATALOG NO. | COPPER FLARE | MALE IRON PIPE | LENGTH | HEIGHT | APPROX. WT. LBS. |
|-------------------|-------------|--------------|----------------|--------|--------|------------------|
| 3/4" | 105NL-C3M3 | 3/4" | 3/4" | 1.65" | 1.78" | 0.9 |
| 1" | 105NL-C4M4 | 1" | 1" | 2.01" | 2.09" | 1.4 |
| 1 1/2" | 105NL-C6M6 | 1 1/2" | 1 1/2" | 2.66" | 2.66" | 4.2 |
| 2" | 105NL-C7M7 | 2" | 2" | 3.13" | 3.25" | 7.2 |

Submitted by: